

Griddle



Evenly heat distribution
Divide into flat and grooved area,
independent temperature control.

700/900 series Gas / Electric Griddle

700 Series Gas 2/3 Flat 1/3 Grooved
Griddle With Cabinet

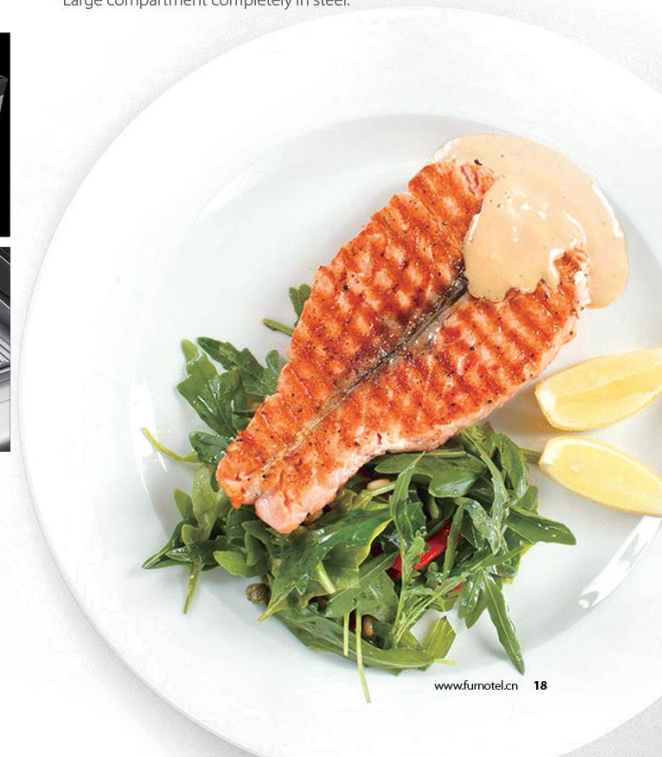
700 Series Electric 2/3 Flat 1/3
Grooved Griddle With Cabinet

- *Chrome-plated griddle surface, grooved/flat griddle surface.
- *Efficient heat transfer throughout the cooking area.
- *With splash board, non-sticking grease.
- *Detachable griddle board, easy cleaning.
- *Slightly sloped working surface, convenient for sauce cleaning.

900 Series Gas 2/3 Flat 1/3 Grooved
Griddle With Cabinet

900 Series Electric 2/3 Flat 1/3 Grooved
Griddle With Cabinet

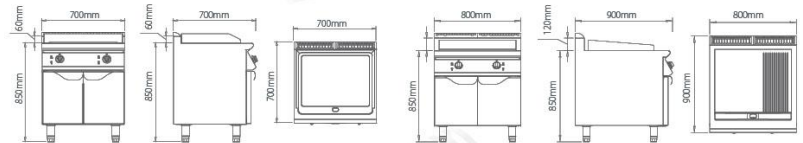
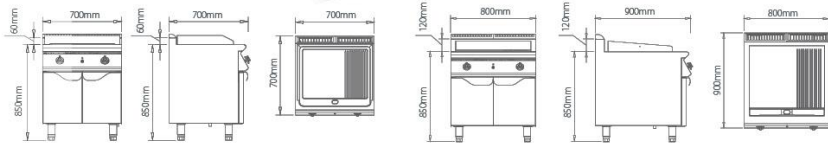
- *Stainless steel tubular dual-flame burner, to heat two cooking zones controlled by their respective controls.
- *Pilot flame and thermocouple safety valve.
- *Piezoelectric ignition with rubber protection.
- *The particular design allows one to cook fish, meat and vegetables, preventing fat from burning.
- *All components can be easily disassembled for regular operations of maintenance and cleaning.
- *Large compartment completely in steel.



Griddle



- * Each individual thermostat controls one-half of the cooking surface.
- * The series griddles feature "heat bank" technology-giving you significantly faster and more evenly distributed heat than typical gas fired griddle.



F7070GDC

700 Series

Gas 2/3 Flat 1/3 Grooved Griddle With Cabinet

Dimension	700 x 700 x 850+60mm
Griddle Size	600 x 460 x 16mm
Power	10KW
Net Weight	92KG
Voltage	/
LPG Pressure	2800pa
LPG Consumption	0.72 KG/h
NG Pressure	2000pa
NG Consumption	1.06 m3/h

*Italy PEL valve or Taiwan ALPHA valve with CE certification. *With fire observation hole

F9080GDC

900 Series

Gas 2/3 Flat 1/3 Grooved Griddle With Cabinet

Dimension	800 x 900 x 850+120mm
Griddle Size	700 x 580 x 16mm
Power	15KW
Net Weight	140KG
Voltage	/
LPG Pressure	2800pa
LPG Consumption	1.078 KG/h
NG Pressure	2000pa
NG Consumption	1.587 m3/h

F7070EDC

700 Series

Electric 2/3 Flat 1/3 Grooved Griddle With Cabinet

Dimension	700 x 700 x 850+60mm
Griddle Size	600 x 460 x 16mm
Power	9KW
Net Weight	89.5KG
Voltage	380V/50Hz
LPG Pressure	/
LPG Consumption	/
NG Pressure	/
NG Consumption	/

*The heater and control with CE certification

F9080EDC

900 Series

Electric 2/3 Flat 1/3 Grooved Griddle With Cabinet

Dimension	800 x 900 x 850+120mm
Griddle Size	700 x 580 x 16mm
Power	12KW
Net Weight	125KG
Voltage	380V/50Hz
LPG Pressure	/
LPG Consumption	/
NG Pressure	/
NG Consumption	/

*The heater and control with CE certification